



PARACELSUSBAD SALZBURG

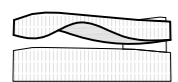
PROJEKTVORSTELLUNG AM 27. Juni 2016



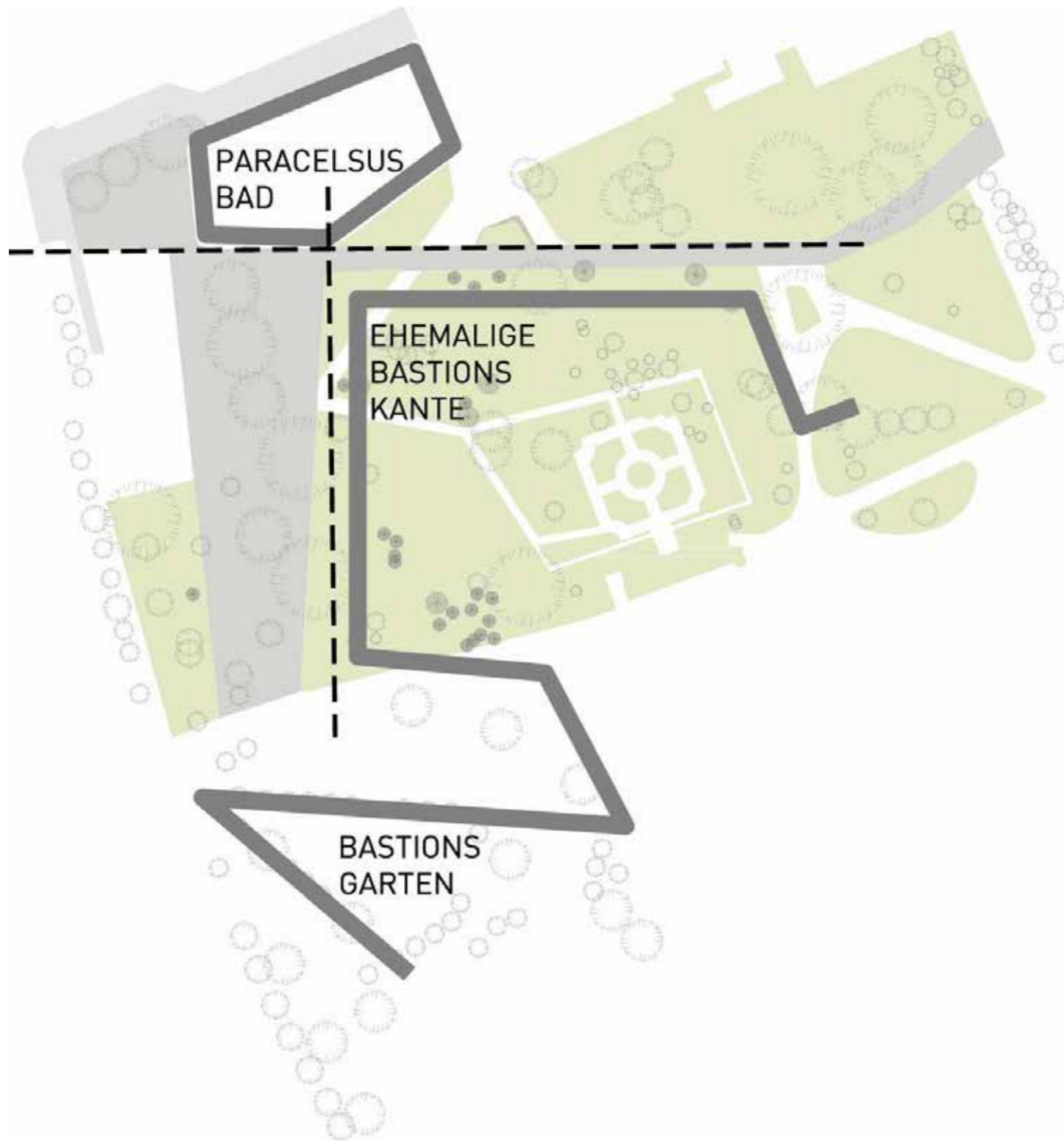
STADT : SALZBURG



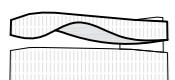
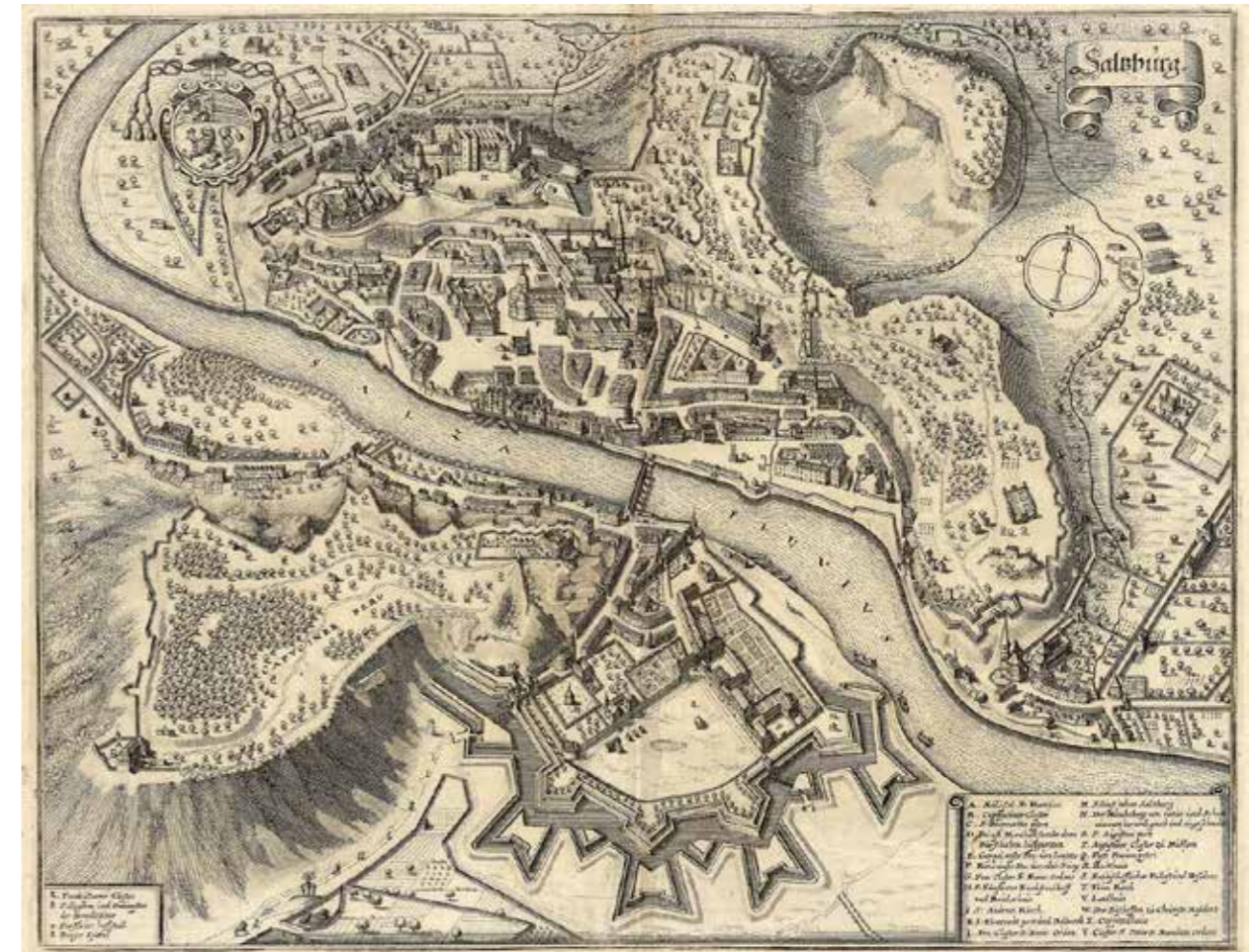
BERGER PARKKINEN
+ **ARCHITEKTEN**



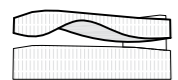
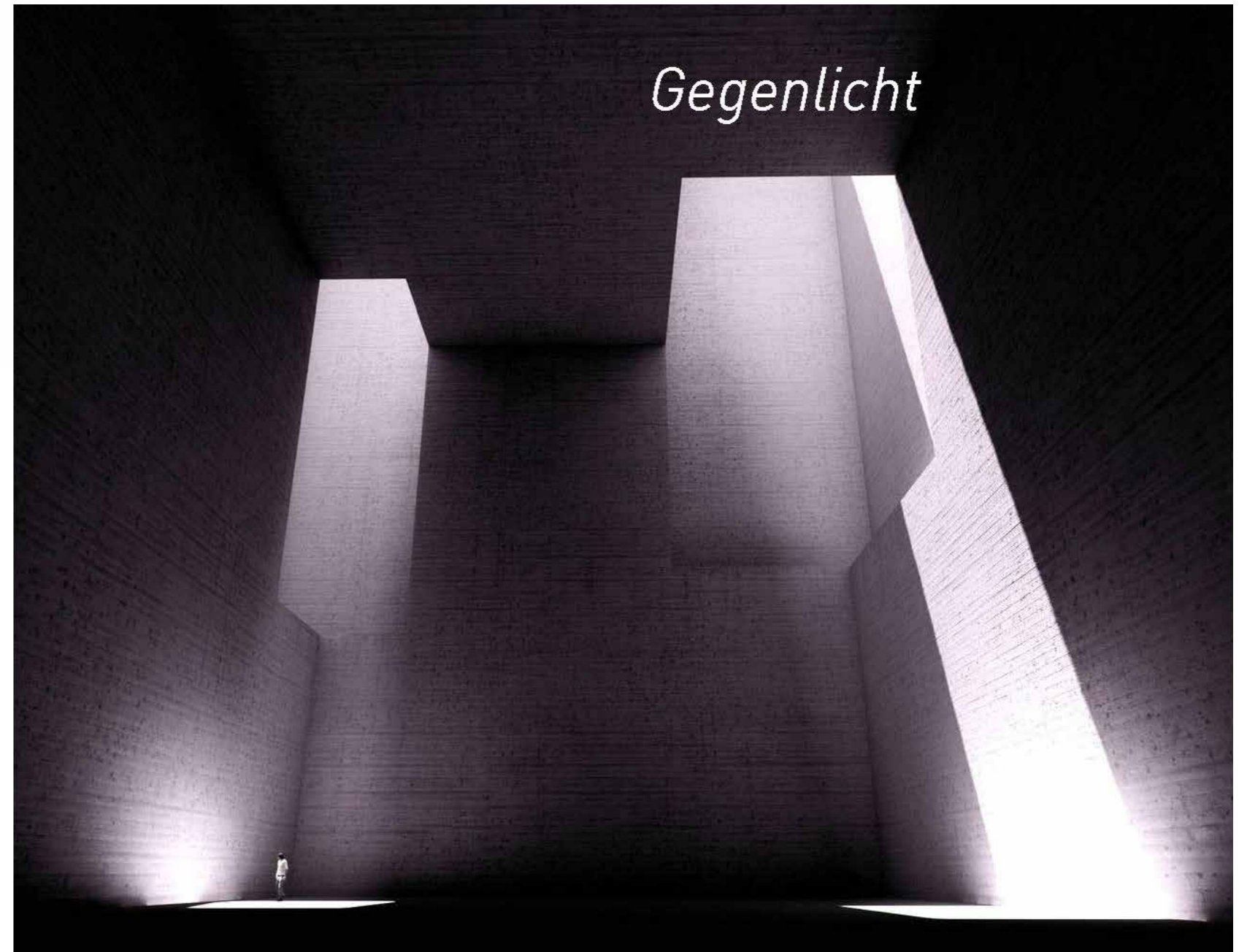
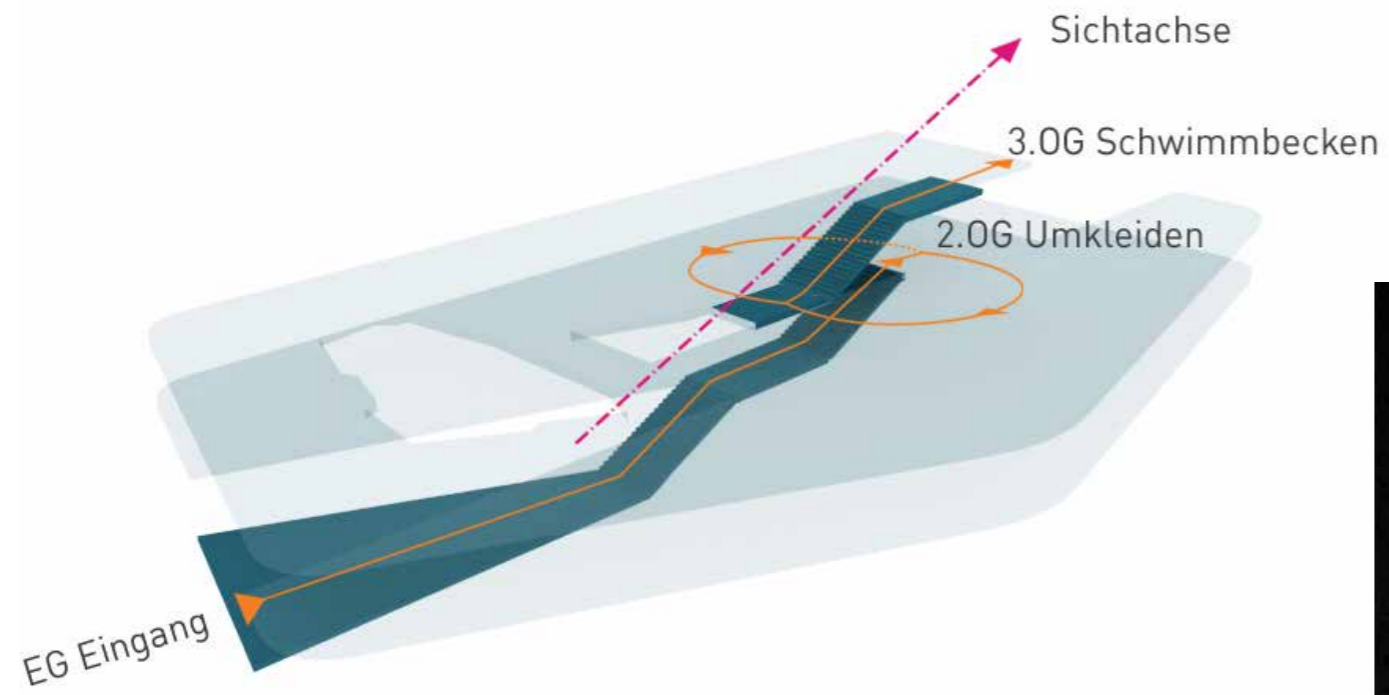




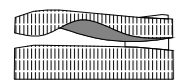
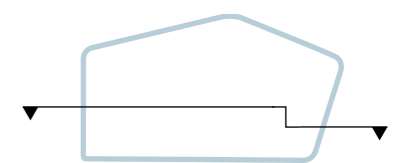
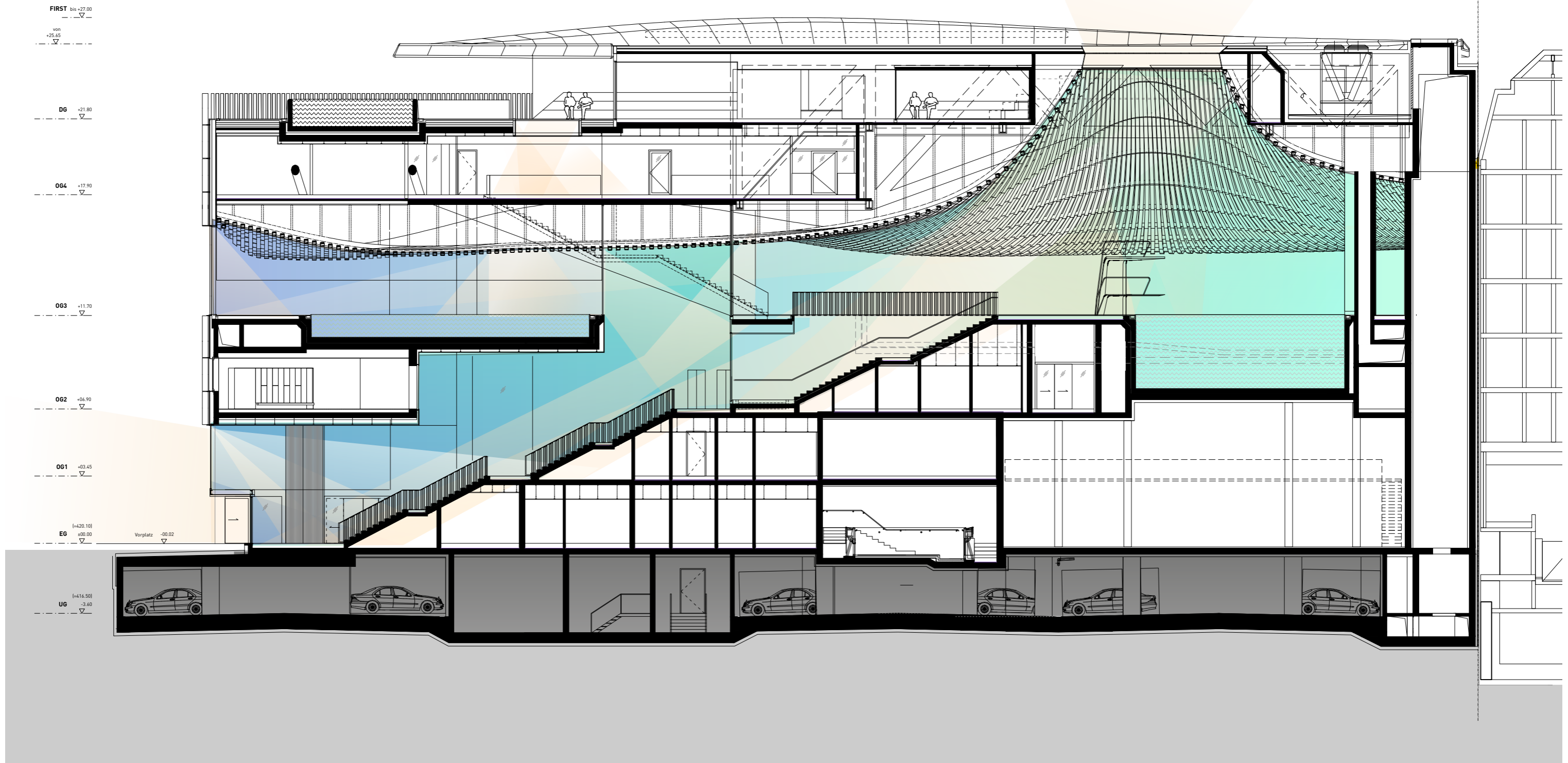
Das Volumen des Badehauses definiert sich als Übergang zwischen den gründerzeitlichen Hauskanten der Auersperg- und der Schwarzstraße und dem historisch gewachsenen Kurgarten. Die verschwenkte Geometrie zur Parkseite nimmt Bezug auf die verschwundenen Wehrmauern und dem zugeschütteten Wassergraben der ehemaligen Bastionsanlage.



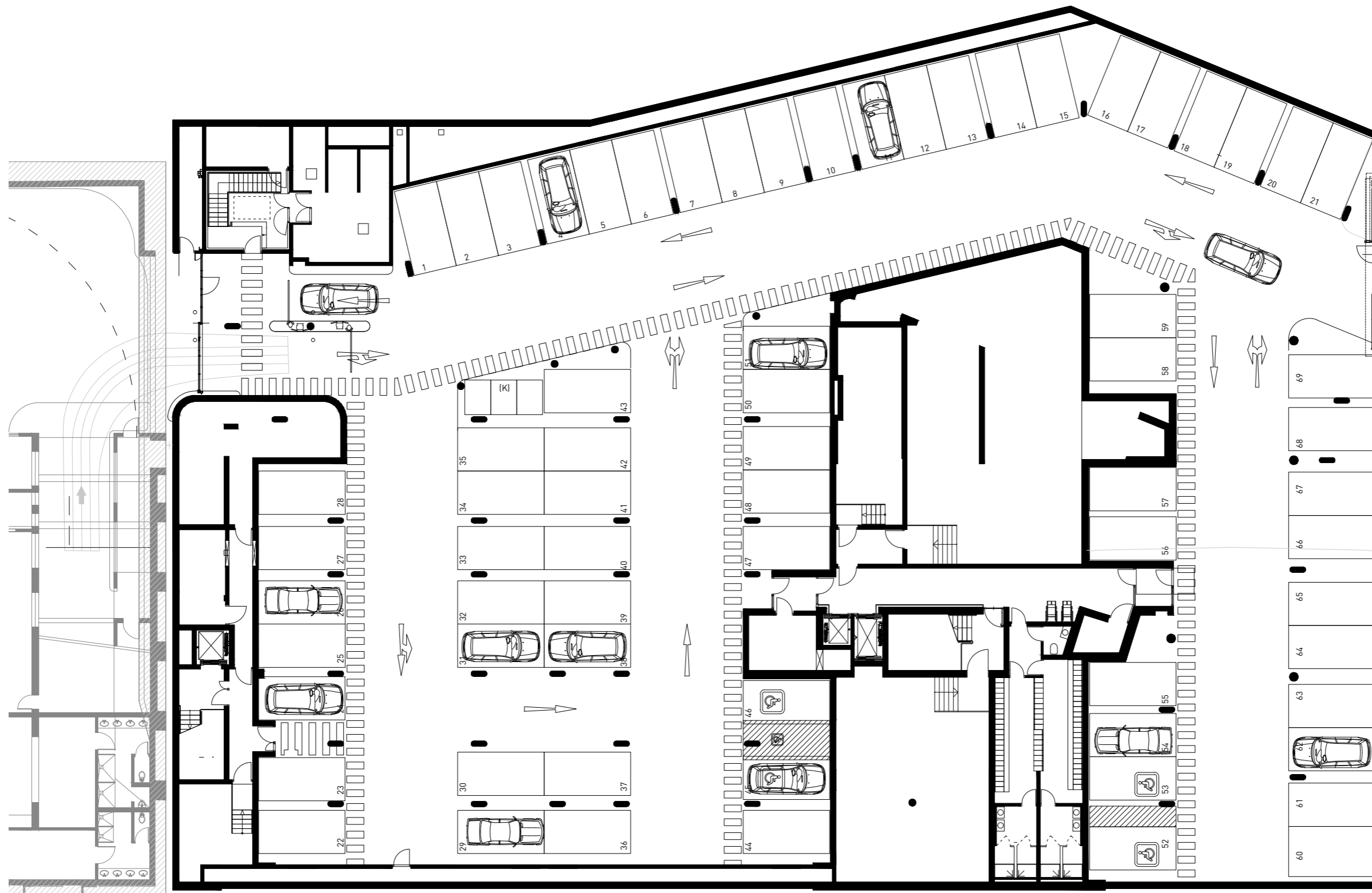
ENTREEBEREICH



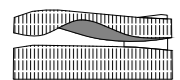
LÄNGSSCHNITT



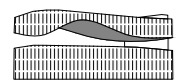
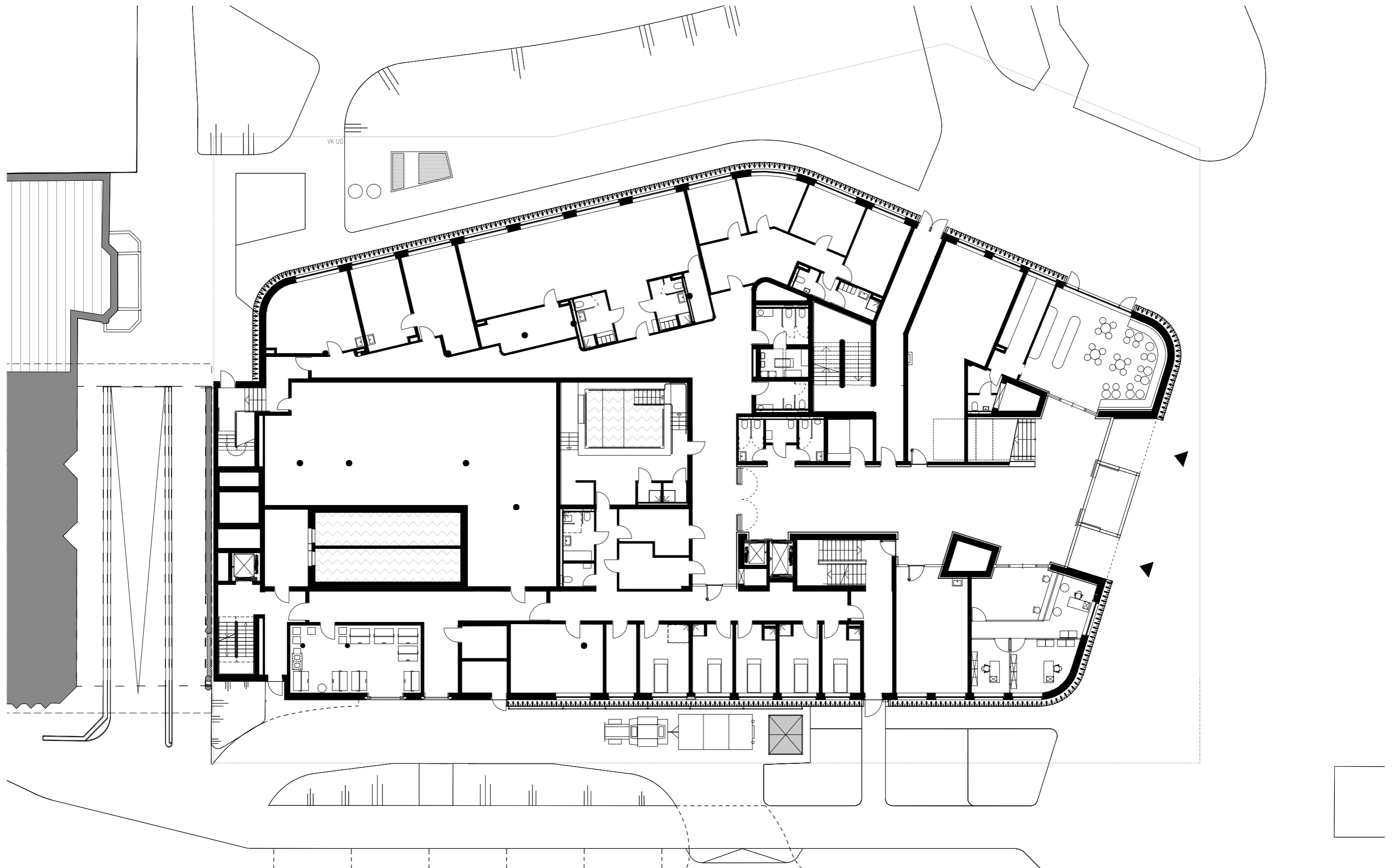
UNTERGESCHOSS

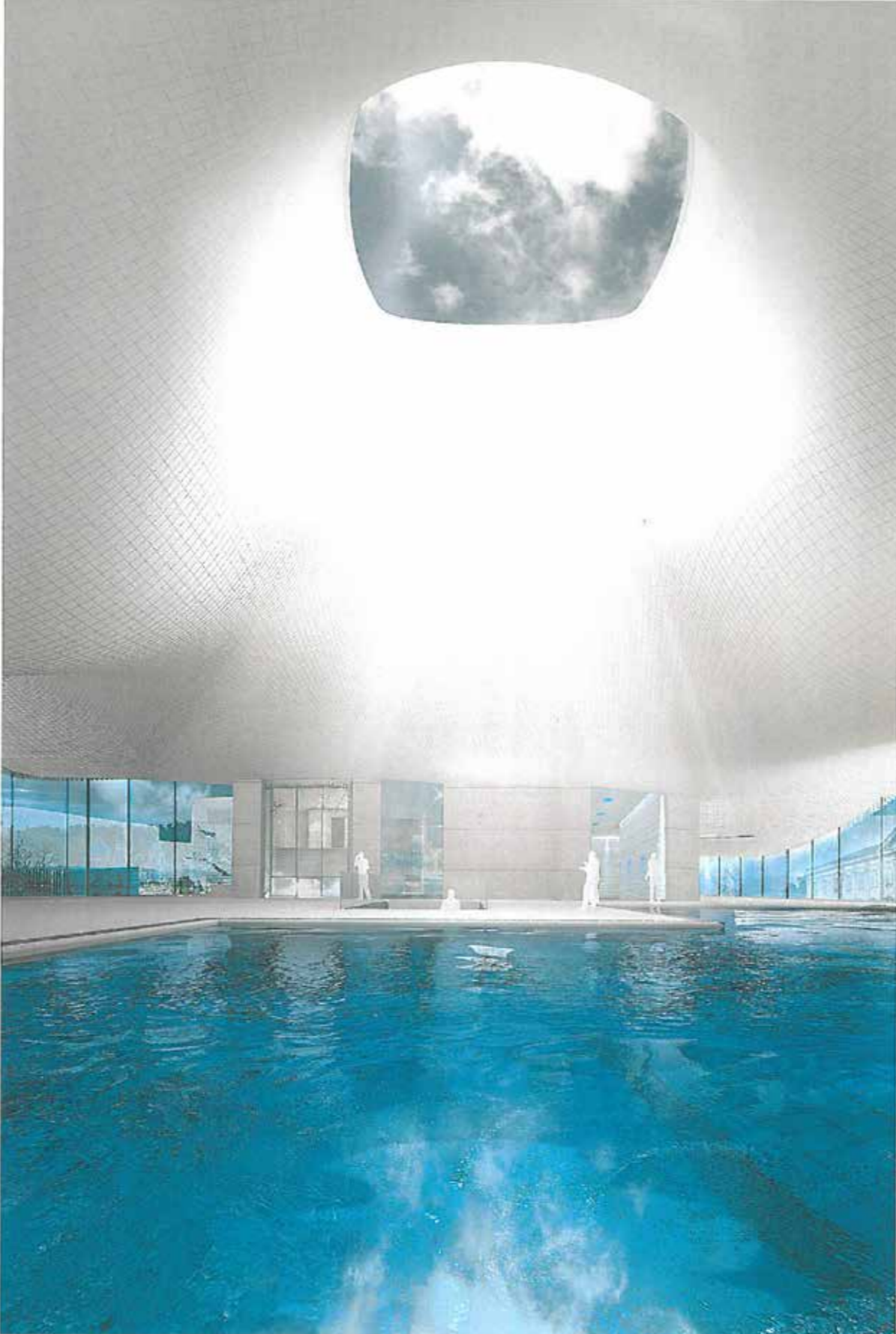


VERBINDUNG
BAUFELD B

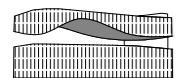
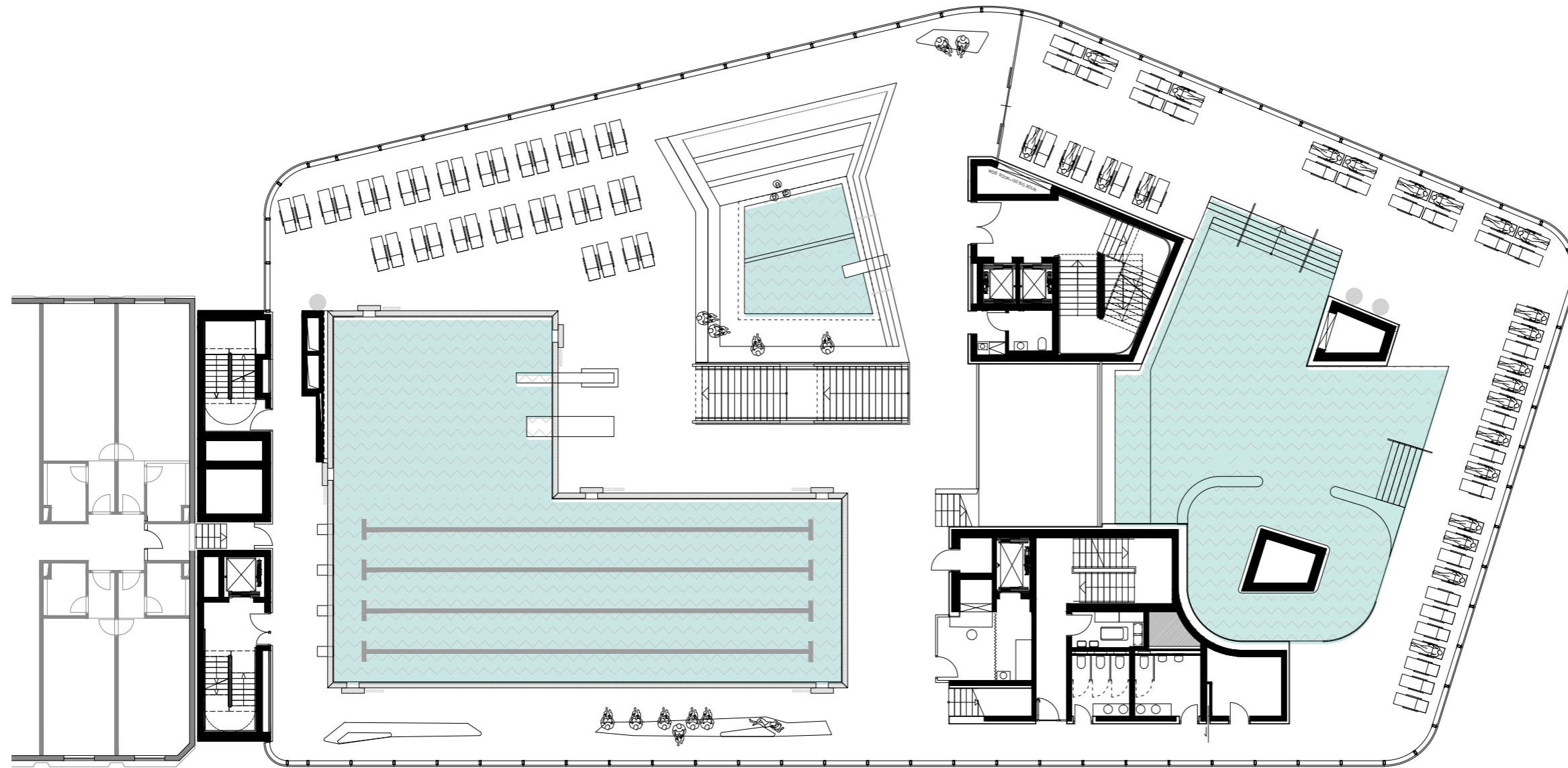


ERDGESCHOSS





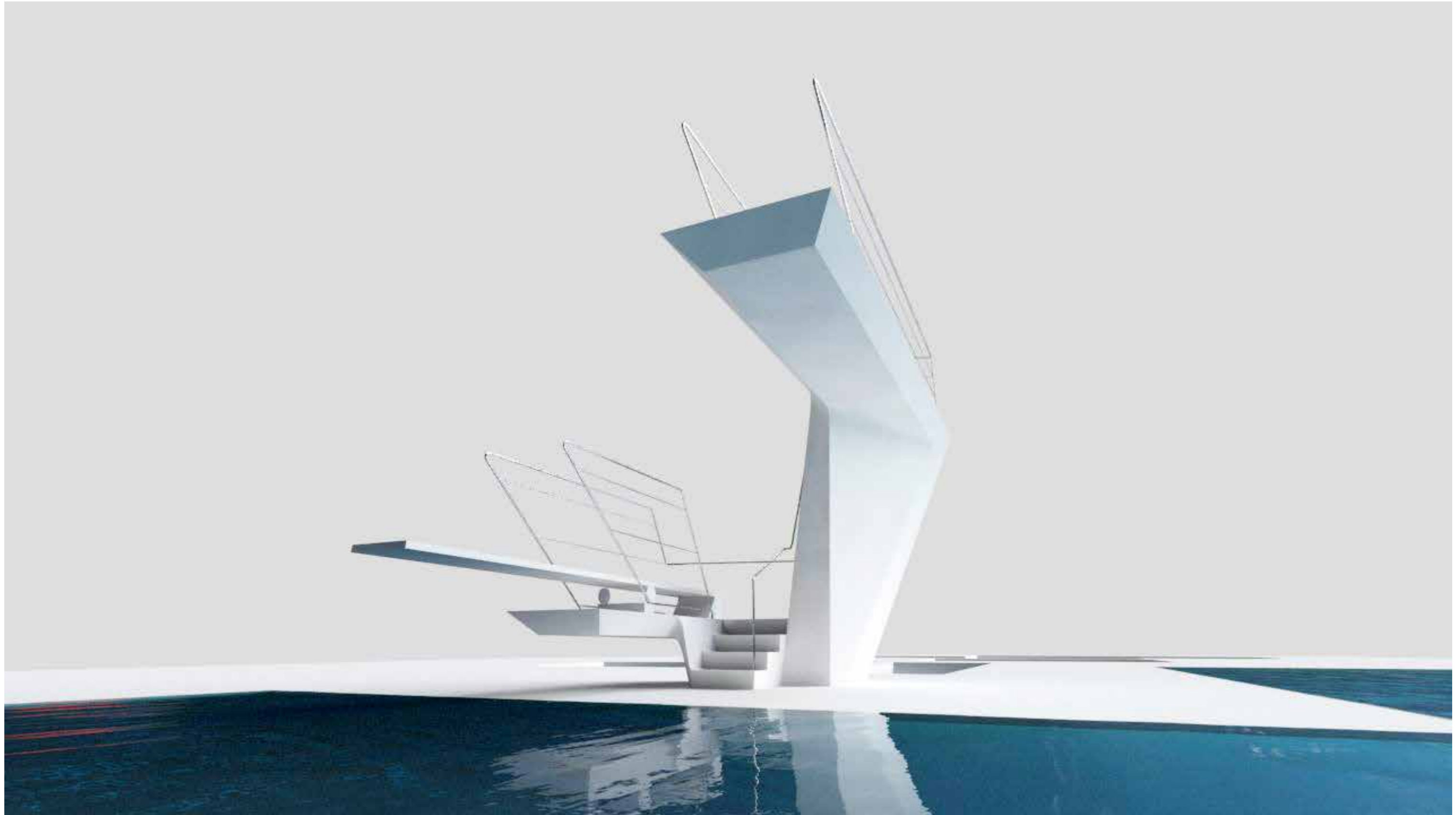
HALLENBAD - OBERGESCHOSS 3



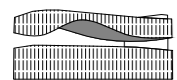
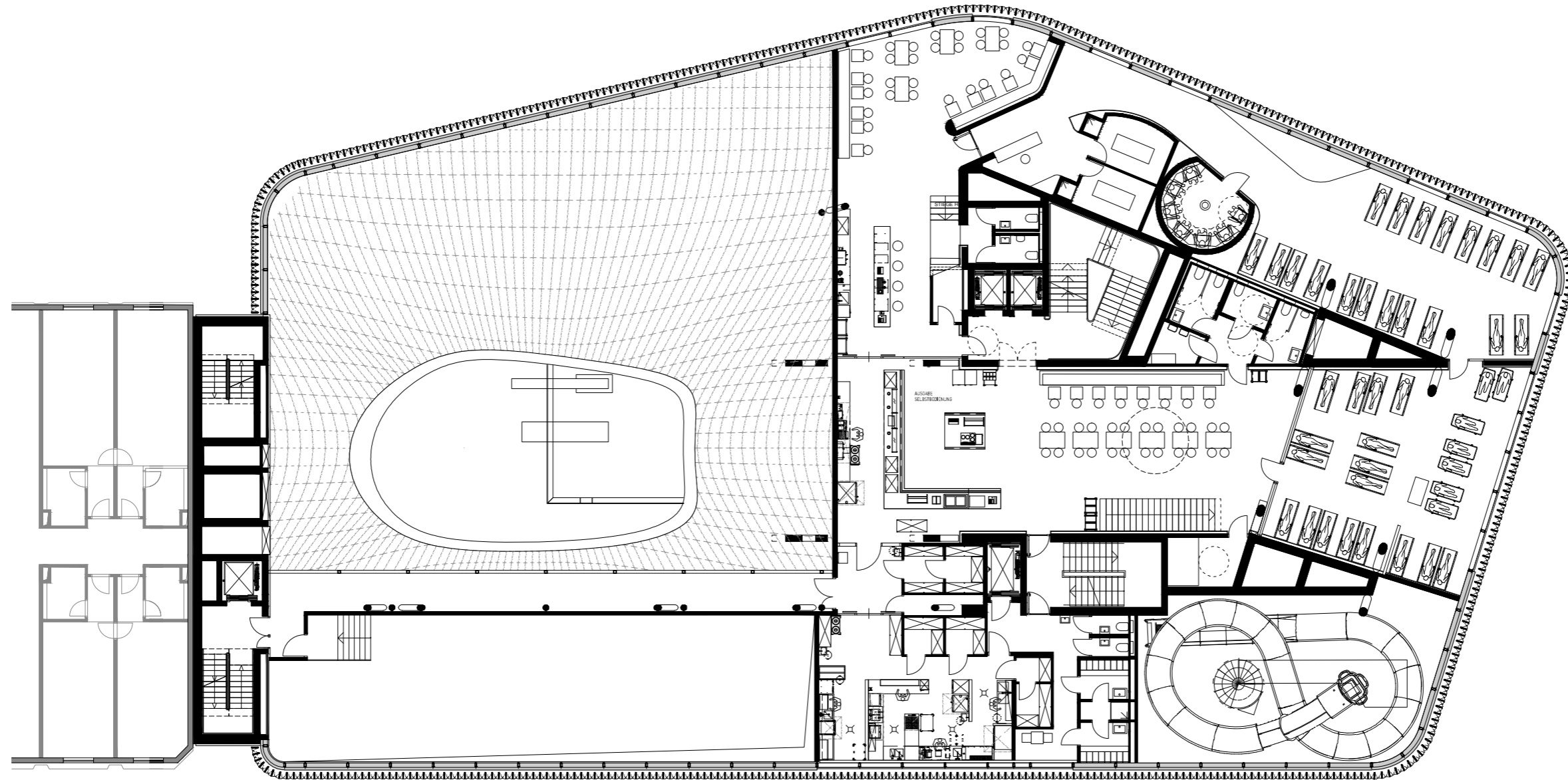
PANORAMABLICK AUS HALLENBAD



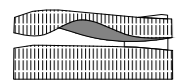
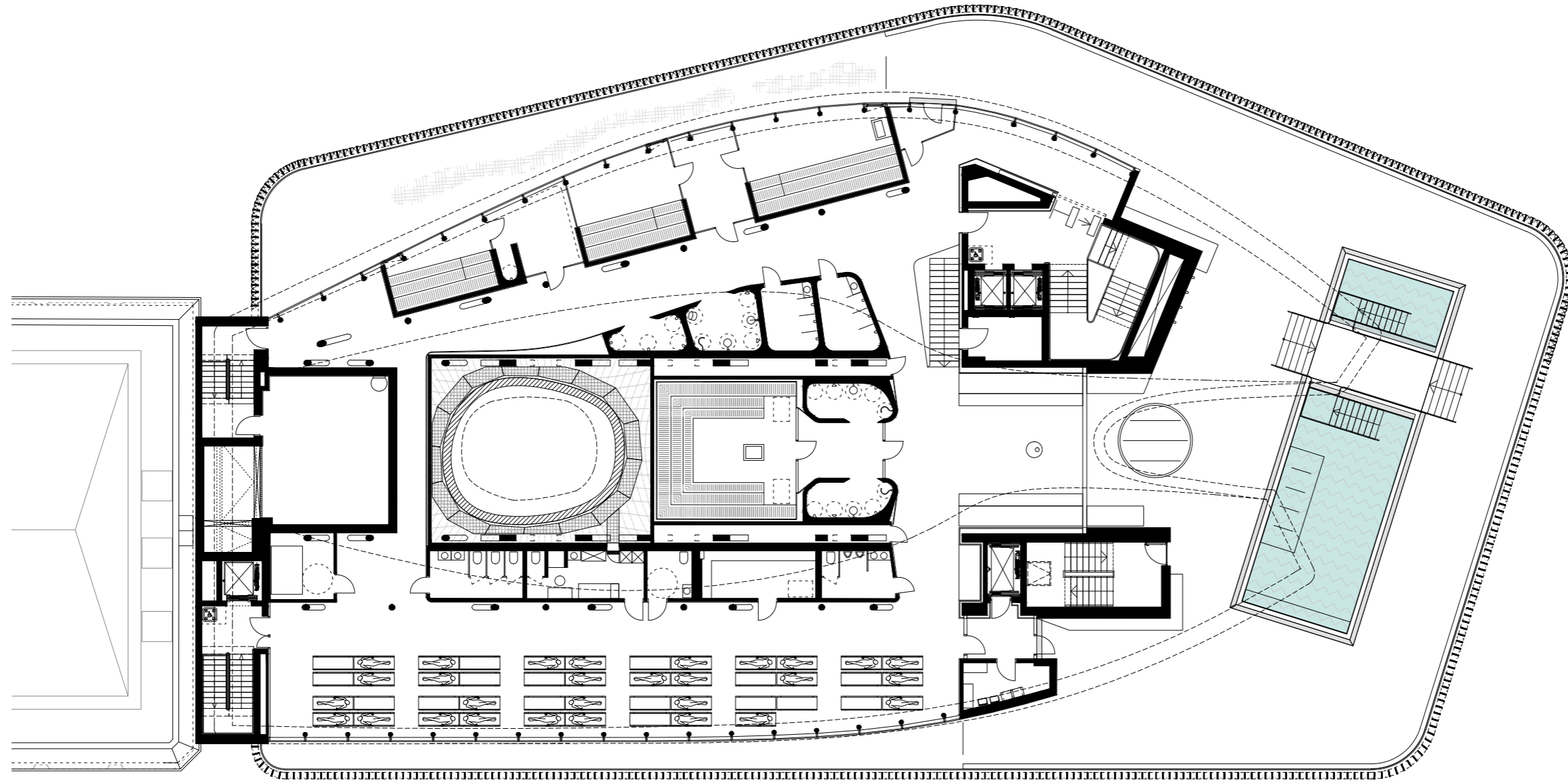
SPRUNGTURM - OBERGESCHOSS 3



GASTRONOMIE - OBERGESCHOSS 4

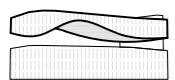
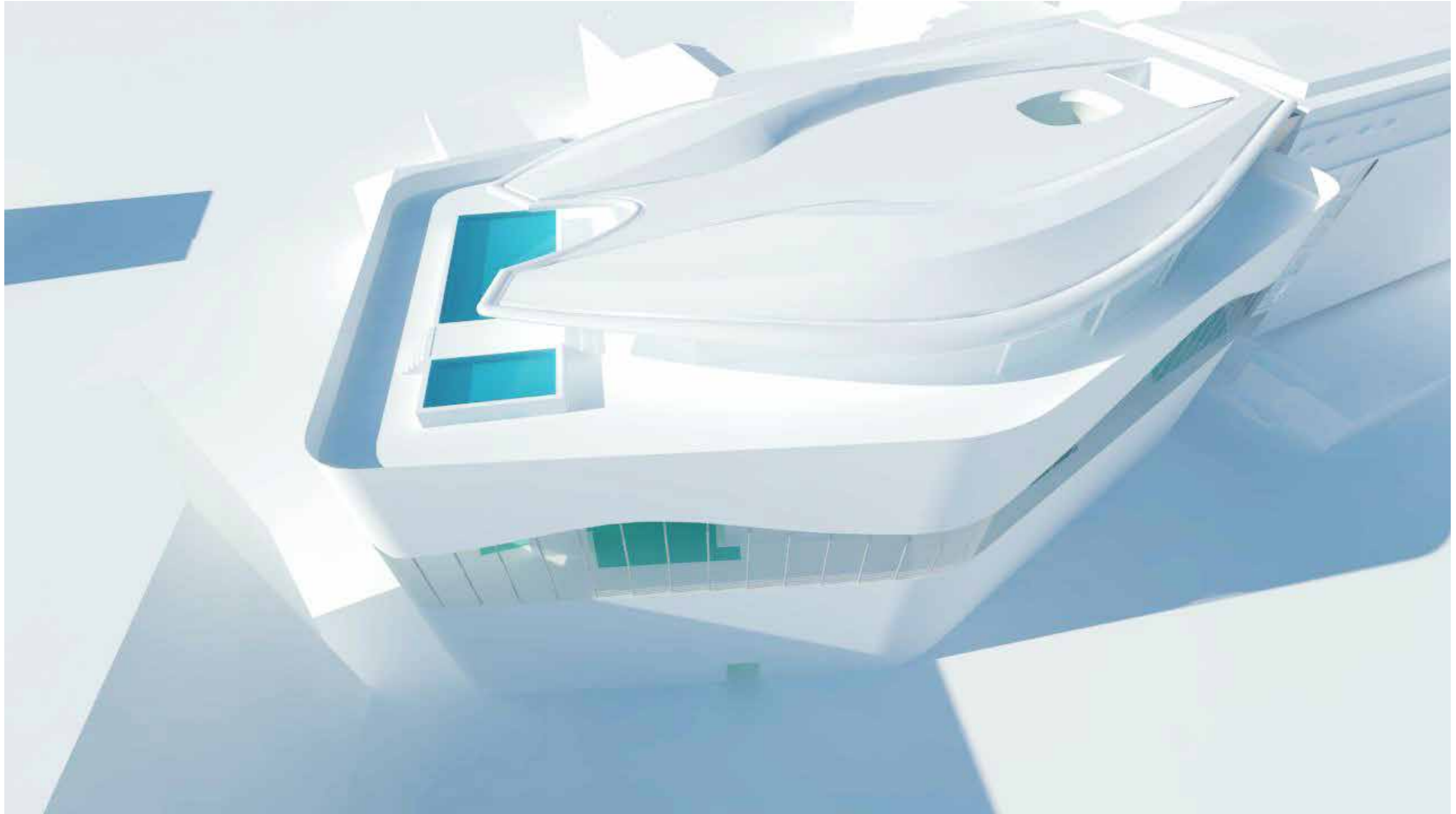


SAUNALANDSCHAFT - DACHGESCHOSS



SAUNALANDSCHAFT - DACHGESCHOSS





BLICK AUF PARACELSUSBAD



Copyright

BERGER+PARKKINEN Architekten ZT GmbH

Alle Abbildungen und Texte sind urheberrechtliche geschützt. Jede Verwendung innerhalb der engen Grenzen des Urheberrechtsgesetzes ist ohne Zustimmung von Berger+Parkkinen Architekten unzulässig und strafbar.



PARACELUSBAD SALZBURG

BERGER+PARKKINEN Architekten Ziviltechniker GmbH